

Figure 4
TL-637

Vegetation Communities Map

Overview Version Date: 5/30/2013

- Map Page Index
- Access
- Poles



SCALE=1:60,000

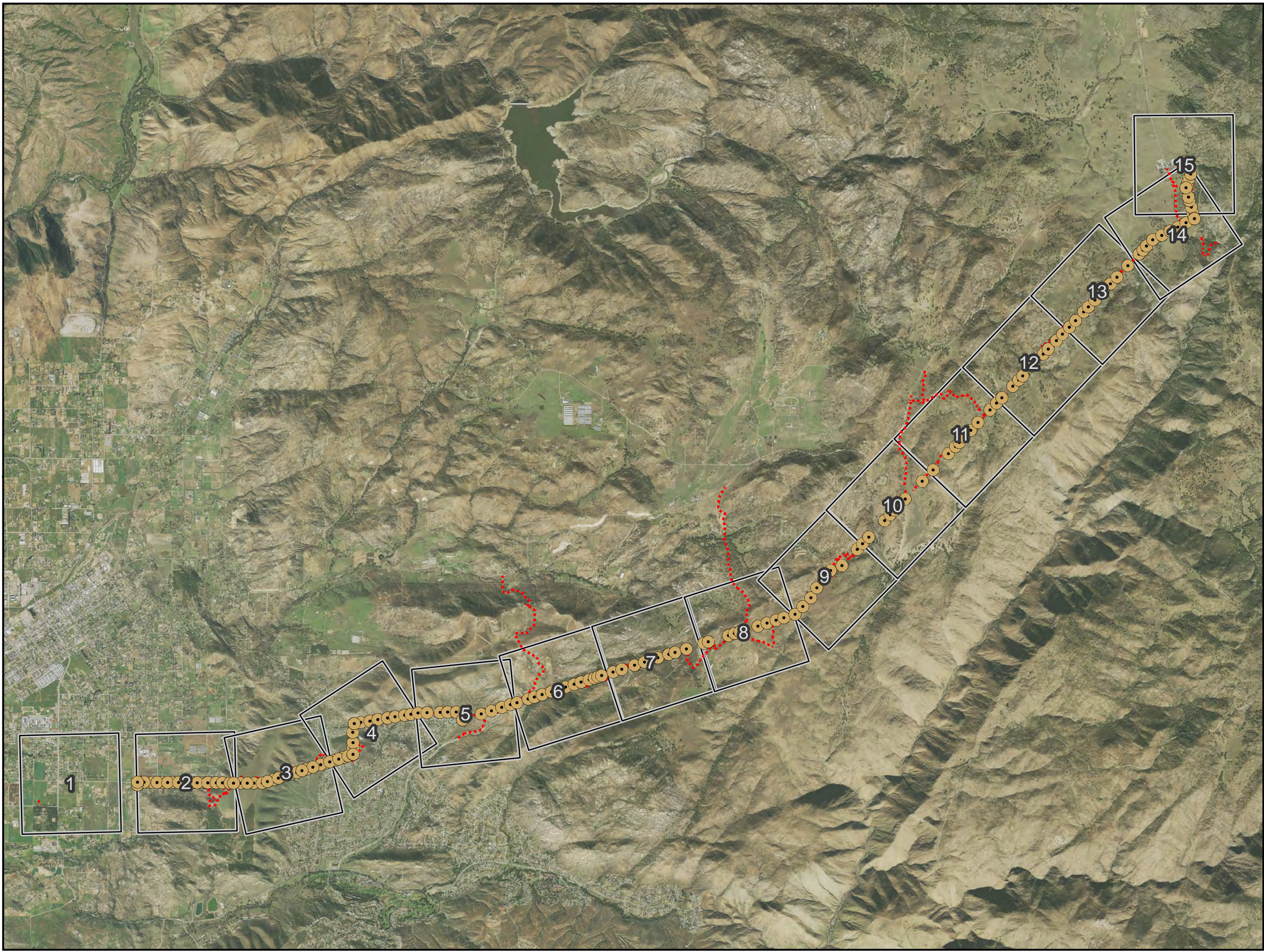
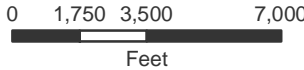








Figure 4
TL-637

Vegetation Communities Map

Page 1 of 15 Version Date: 5/31/2013

-  Poles
-  Access
-  Staging Yards
-  String Sites
-  Guard Structure
-  Survey Area
-  National Wetland Inventory

- Vegetation**
-  1. Agriculture/Orchards/Pasture
 -  2. Chaparral
 -  3. Coast Live Oak Woodland
 -  4. Coastal Sage Scrub
 -  5. Disturbed Wetland
 -  6. Disturbed (Ruderal/Barren)
 -  7. Disturbed Coastal Sage Scrub
 -  8. Disturbed Southern Mixed Chaparral
 -  9. Freshwater Seep/Open Water
 -  10. Grassland
 -  11. Mixed Disturbed Coastal Sage Scrub/Chaparral
 -  12. Mixed Disturbed Coastal Sage Scrub/Grassland
 -  13. Mixed Oak Woodland
 -  14. Oak Savanna
 -  15. Open Engleman Oak Woodland
 -  16. Southern Mixed Chaparral
 -  17. Southern Mixed Chaparral/CSS
 -  18. Southern Riparian Forest
 -  19. Urban and Developed/Ornamental Landscaping

- Rare Plants**
-  Rare Plant Points
 -  Astragalus oocarpus
 -  Brodiaea orcuttii
 -  Clarkia delicata
 -  Symphyotrichum defoliatum
 -  Tetracoccus dioicus

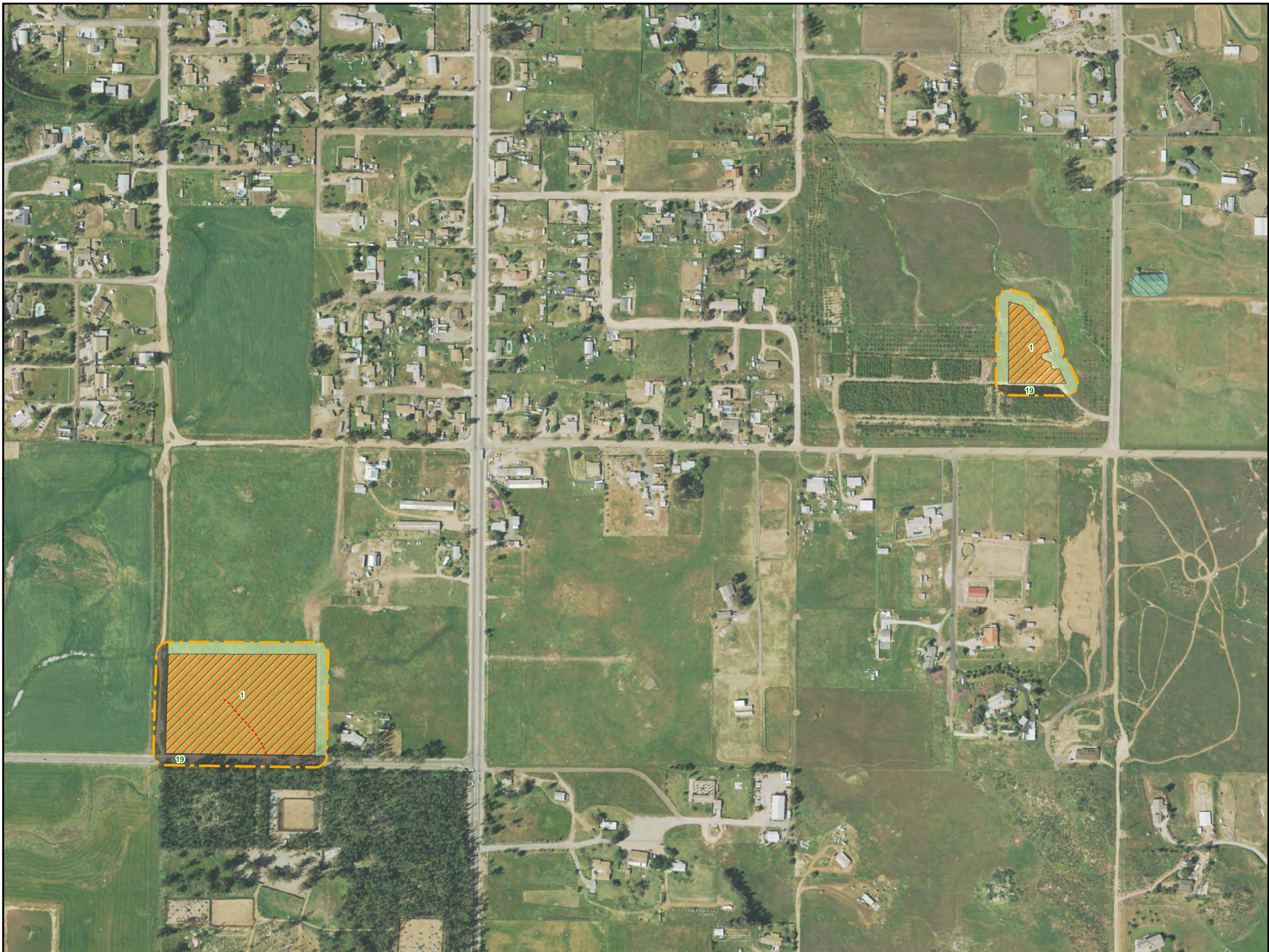


Figure 4
TL-637

Vegetation Communities Map



- Poles
- Access
- Staging Yards
- String Sites
- Guard Structure
- Survey Area
- National Wetland Inventory

Vegetation

- 1. Agriculture/Orchards/Pasture
- 2. Chaparral
- 3. Coast Live Oak Woodland
- 4. Coastal Sage Scrub
- 5. Disturbed Wetland
- 6. Disturbed (Ruderal/Barren)
- 7. Disturbed Coastal Sage Scrub
- 8. Disturbed Southern Mixed Chaparral
- 9. Freshwater Seep/Open Water
- 10. Grassland
- 11. Mixed Disturbed Coastal Sage Scrub/Chaparral
- 12. Mixed Disturbed Coastal Sage Scrub/Grassland
- 13. Mixed Oak Woodland
- 14. Oak Savanna
- 15. Open Engleman Oak Woodland
- 16. Southern Mixed Chaparral
- 17. Southern Mixed Chaparral/CSS
- 18. Southern Riparian Forest
- 19. Urban and Developed/Ornamental Landscaping

Rare Plants

- Rare Plant Points
- Astragalus oocarpus
- Brodiaea orcuttii
- Clarkia delicata
- Symphyotrichum defoliatum
- Tetracoccus dioicus









Figure 4
TL-637

Vegetation Communities Map

Page 3 of 15 Version Date: 5/31/2013

-  Poles
-  Access
-  Staging Yards
-  String Sites
-  Guard Structure
-  Survey Area
-  National Wetland Inventory

- Vegetation**
-  1. Agriculture/Orchards/Pasture
 -  2. Chaparral
 -  3. Coast Live Oak Woodland
 -  4. Coastal Sage Scrub
 -  5. Disturbed Wetland
 -  6. Disturbed (Ruderal/Barren)
 -  7. Disturbed Coastal Sage Scrub
 -  8. Disturbed Southern Mixed Chaparral
 -  9. Freshwater Seep/Open Water
 -  10. Grassland
 -  11. Mixed Disturbed Coastal Sage Scrub/Chaparral
 -  12. Mixed Disturbed Coastal Sage Scrub/Grassland
 -  13. Mixed Oak Woodland
 -  14. Oak Savanna
 -  15. Open Engleman Oak Woodland
 -  16. Southern Mixed Chaparral
 -  17. Southern Mixed Chaparral/CSS
 -  18. Southern Riparian Forest
 -  19. Urban and Developed/Ornamental Landscaping

- Rare Plants**
-  Rare Plant Points
 -  Astragalus oocarpus
 -  Brodiaea orcuttii
 -  Clarkia delicata
 -  Symphyotrichum defoliatum
 -  Tetracoccus dioicus

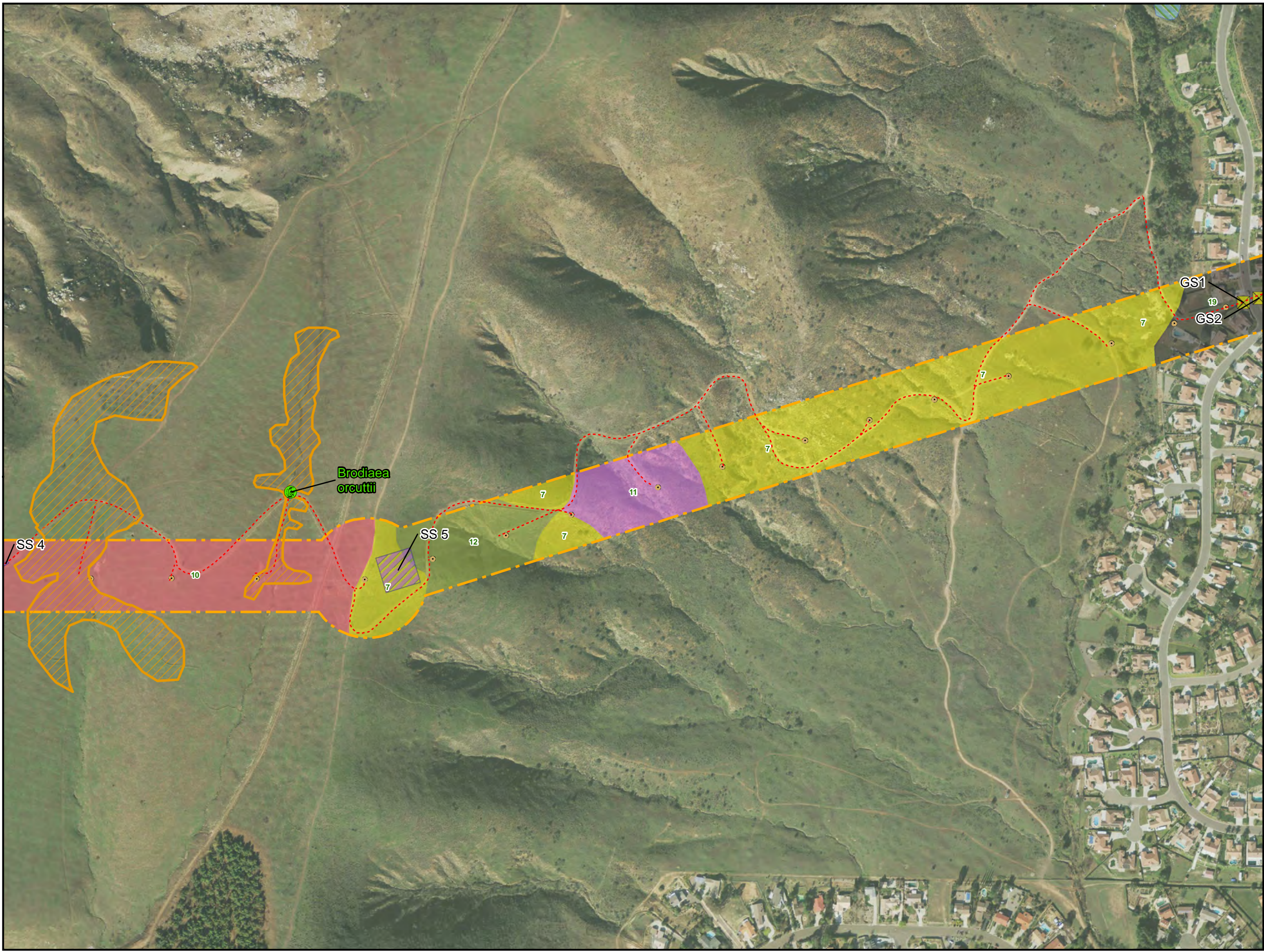








Figure 4
TL-637

Vegetation Communities Map

Page 4 of 15 Version Date: 5/31/2013

-  Poles
-  Access
-  Staging Yards
-  String Sites
-  Guard Structure
-  Survey Area
-  National Wetland Inventory

- Vegetation**
-  1. Agriculture/Orchards/Pasture
 -  2. Chaparral
 -  3. Coast Live Oak Woodland
 -  4. Coastal Sage Scrub
 -  5. Disturbed Wetland
 -  6. Disturbed (Ruderal/Barren)
 -  7. Disturbed Coastal Sage Scrub
 -  8. Disturbed Southern Mixed Chaparral
 -  9. Freshwater Seep/Open Water
 -  10. Grassland
 -  11. Mixed Disturbed Coastal Sage Scrub/Chaparral
 -  12. Mixed Disturbed Coastal Sage Scrub/Grassland
 -  13. Mixed Oak Woodland
 -  14. Oak Savanna
 -  15. Open Engelman Oak Woodland
 -  16. Southern Mixed Chaparral
 -  17. Southern Mixed Chaparral/CSS
 -  18. Southern Riparian Forest
 -  19. Urban and Developed/Ornamental Landscaping

- Rare Plants**
-  Rare Plant Points
 -  *Astragalus oocarpus*
 -  *Brodiaea orcuttii*
 -  *Clarkia delicata*
 -  *Symphytichum defoliatum*
 -  *Tetracoccus dioicus*

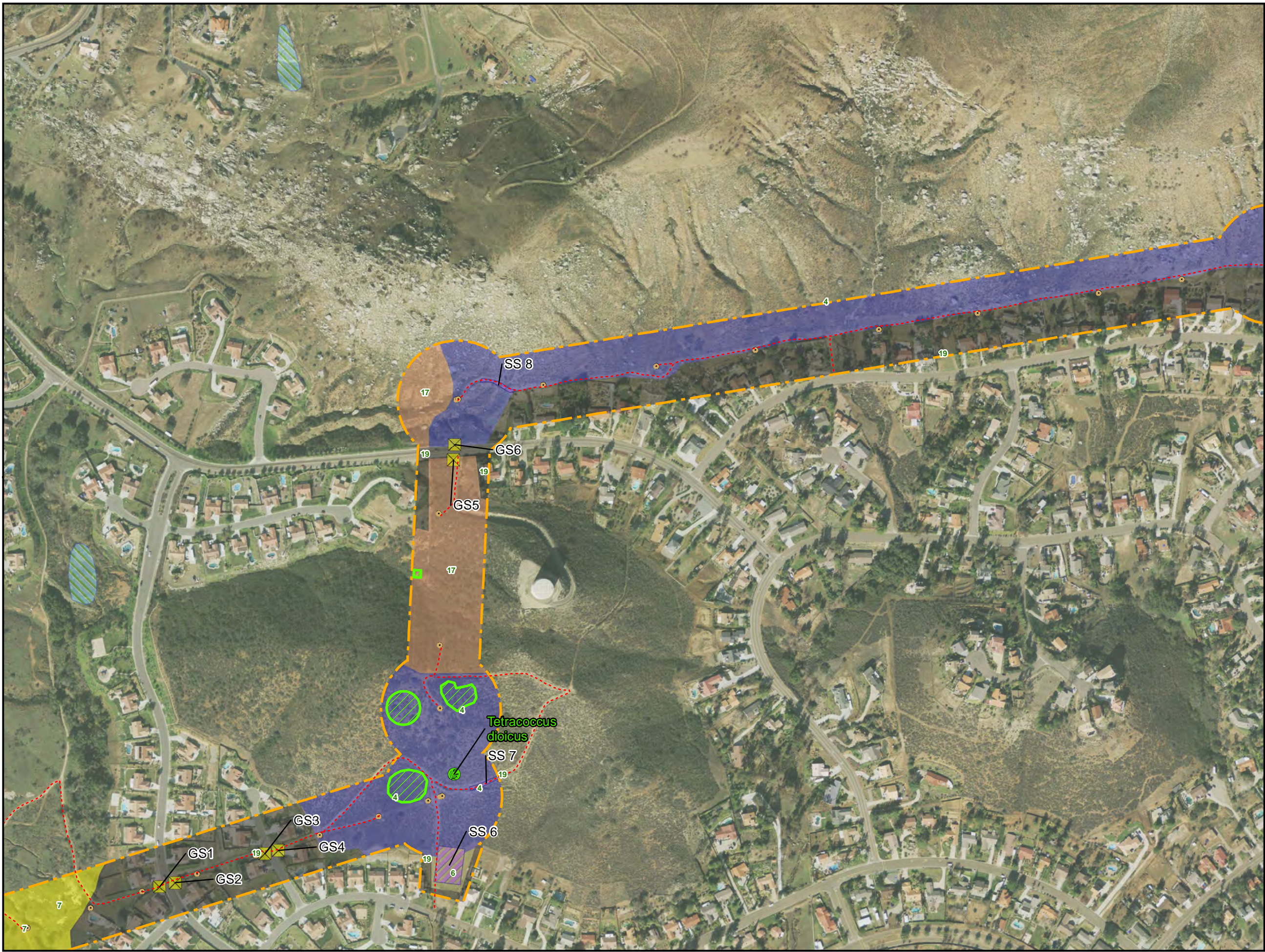


Figure 4
TL-637

Vegetation Communities Map

Page 5 of 15 Version Date: 5/31/2013

-  Poles
-  Access
-  Staging Yards
-  String Sites
-  Guard Structure
-  Survey Area
-  National Wetland Inventory

- Vegetation**
-  1. Agriculture/Orchards/Pasture
 -  2. Chaparral
 -  3. Coast Live Oak Woodland
 -  4. Coastal Sage Scrub
 -  5. Disturbed Wetland
 -  6. Disturbed (Ruderal/Barren)
 -  7. Disturbed Coastal Sage Scrub
 -  8. Disturbed Southern Mixed Chaparral
 -  9. Freshwater Seep/Open Water
 -  10. Grassland
 -  11. Mixed Disturbed Coastal Sage Scrub/Chaparral
 -  12. Mixed Disturbed Coastal Sage Scrub/Grassland
 -  13. Mixed Oak Woodland
 -  14. Oak Savanna
 -  15. Open Engleman Oak Woodland
 -  16. Southern Mixed Chaparral
 -  17. Southern Mixed Chaparral/CSS
 -  18. Southern Riparian Forest
 -  19. Urban and Developed/Ornamental Landscaping







- Rare Plants**
-  Rare Plant Points
 -  Astragalus oocarpus
 -  Brodiaea orcuttii
 -  Clarkia delicata
 -  Symphyotrichum defoliatum
 -  Tetracoccus dioicus



Figure 4
TL-637

Vegetation Communities Map

Page 6 of 15

Version Date: 5/31/2013

-  Poles
-  Access
-  Staging Yards
-  String Sites
-  Guard Structure
-  Survey Area
-  National Wetland Inventory

Vegetation

-  1. Agriculture/Orchards/Pasture
-  2. Chaparral
-  3. Coast Live Oak Woodland
-  4. Coastal Sage Scrub
-  5. Disturbed Wetland
-  6. Disturbed (Ruderal/Barren)
-  7. Disturbed Coastal Sage Scrub
-  8. Disturbed Southern Mixed Chaparral
-  9. Freshwater Seep/Open Water
-  10. Grassland
-  11. Mixed Disturbed Coastal Sage Scrub/Chaparral
-  12. Mixed Disturbed Coastal Sage Scrub/Grassland
-  13. Mixed Oak Woodland
-  14. Oak Savanna
-  15. Open Engleman Oak Woodland
-  16. Southern Mixed Chaparral
-  17. Southern Mixed Chaparral/CSS
-  18. Southern Riparian Forest
-  19. Urban and Developed/Ornamental Landscaping

Rare Plants







-  Rare Plant Points
-  Astragalus oocarpus
-  Brodiaea orcuttii
-  Clarkia delicata
-  Symphyotrichum defoliatum
-  Tetracoccus dioicus



Figure 4
TL-637

Vegetation Communities Map

Page 7 of 15

Version Date: 5/31/2013

-  Poles
-  Access
-  Staging Yards
-  String Sites
-  Guard Structure
-  Survey Area
-  National Wetland Inventory

Vegetation

-  1. Agriculture/Orchards/Pasture
-  2. Chaparral
-  3. Coast Live Oak Woodland
-  4. Coastal Sage Scrub
-  5. Disturbed Wetland
-  6. Disturbed (Ruderal/Barren)
-  7. Disturbed Coastal Sage Scrub
-  8. Disturbed Southern Mixed Chaparral
-  9. Freshwater Seep/Open Water
-  10. Grassland
-  11. Mixed Disturbed Coastal Sage Scrub/Chaparral
-  12. Mixed Disturbed Coastal Sage Scrub/Grassland
-  13. Mixed Oak Woodland
-  14. Oak Savanna
-  15. Open Engelman Oak Woodland
-  16. Southern Mixed Chaparral
-  17. Southern Mixed Chaparral/CSS
-  18. Southern Riparian Forest
-  19. Urban and Developed/Ornamental Landscaping

Rare Plants




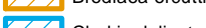
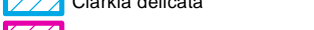
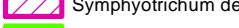


-  Rare Plant Points
-  Astragalus oocarpus
-  Brodiaea orcuttii
-  Clarkia delicata
-  Symphyotrichum defoliatum
-  Tetracoccus dioicus



Figure 4
TL-637







Vegetation Communities Map

-  Poles
-  Access
-  Staging Yards
-  String Sites
-  Guard Structure
-  Survey Area
-  National Wetland Inventory

Vegetation

-  1. Agriculture/Orchards/Pasture
-  2. Chaparral
-  3. Coast Live Oak Woodland
-  4. Coastal Sage Scrub
-  5. Disturbed Wetland
-  6. Disturbed (Ruderal/Barren)
-  7. Disturbed Coastal Sage Scrub
-  8. Disturbed Southern Mixed Chaparral
-  9. Freshwater Seep/Open Water
-  10. Grassland
-  11. Mixed Disturbed Coastal Sage Scrub/Chaparral
-  12. Mixed Disturbed Coastal Sage Scrub/Grassland
-  13. Mixed Oak Woodland
-  14. Oak Savanna
-  15. Open Engleman Oak Woodland
-  16. Southern Mixed Chaparral
-  17. Southern Mixed Chaparral/CSS
-  18. Southern Riparian Forest
-  19. Urban and Developed/Ornamental Landscaping

Rare Plants

-  Rare Plant Points
-  *Astragalus oocarpus*
-  *Brodiaea orcuttii*
-  *Clarkia delicata*
-  *Symphyotrichum defoliatum*
-  *Tetracoccus dioicus*

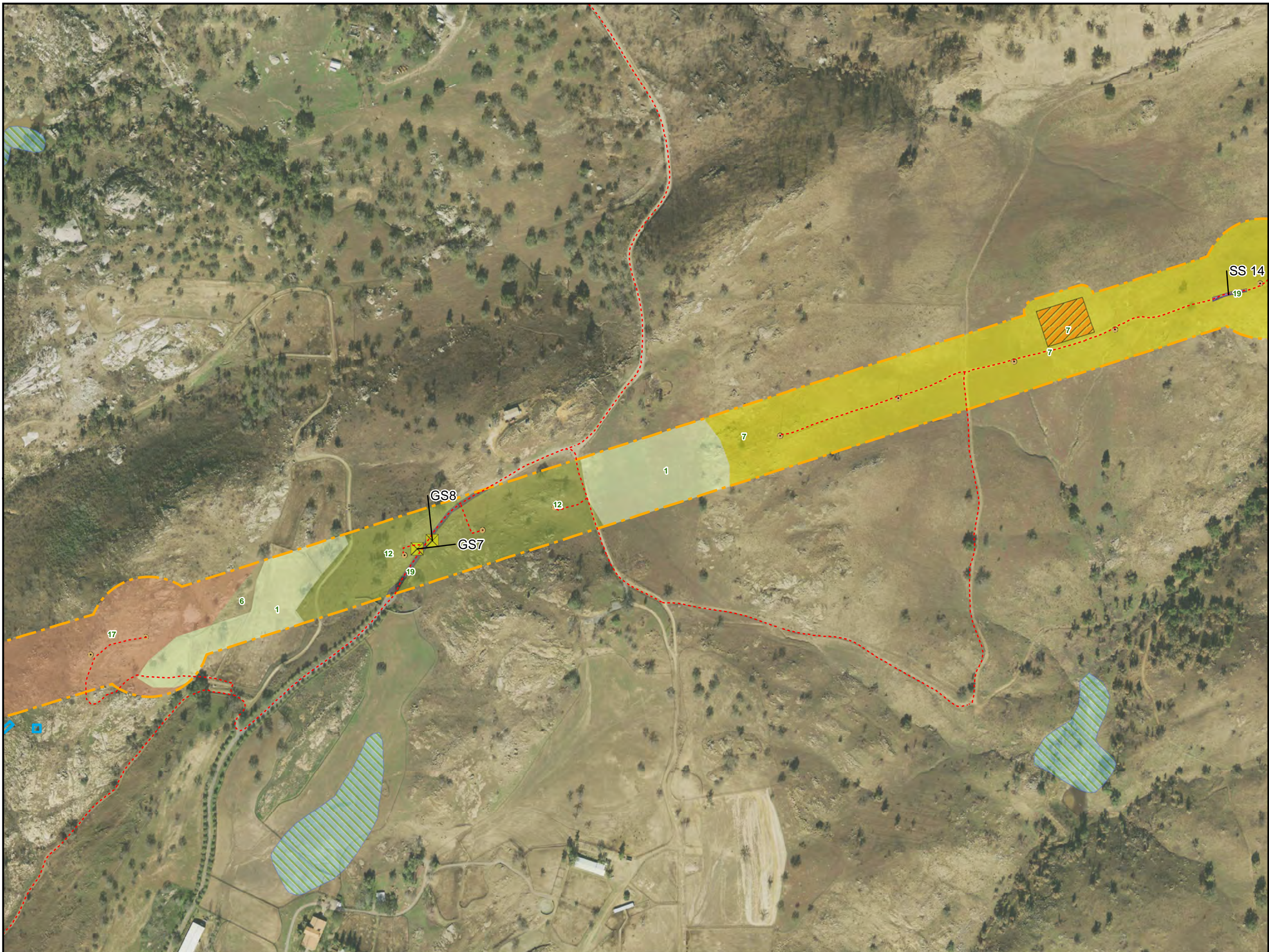


Figure 4
TL-637

Vegetation Communities Map

Page 9 of 15 Version Date: 5/31/2013

- Poles
- Access
- Staging Yards
- String Sites
- Guard Structure
- Survey Area
- National Wetland Inventory

- Vegetation**
1. Agriculture/Orchards/Pasture
 2. Chaparral
 3. Coast Live Oak Woodland
 4. Coastal Sage Scrub
 5. Disturbed Wetland
 6. Disturbed (Ruderal/Barren)
 7. Disturbed Coastal Sage Scrub
 8. Disturbed Southern Mixed Chaparral
 9. Freshwater Seep/Open Water
 10. Grassland
 11. Mixed Disturbed Coastal Sage Scrub/Chaparral
 12. Mixed Disturbed Coastal Sage Scrub/Grassland
 13. Mixed Oak Woodland
 14. Oak Savanna
 15. Open Engelman Oak Woodland
 16. Southern Mixed Chaparral
 17. Southern Mixed Chaparral/CSS
 18. Southern Riparian Forest
 19. Urban and Developed/Ornamental Landscaping

- Rare Plants**
- Rare Plant Points
 - Astragalus oocarpus
 - Brodiaea orcuttii
 - Clarkia delicata
 - Symphyotrichum defoliatum
 - Tetracoccus dioicus

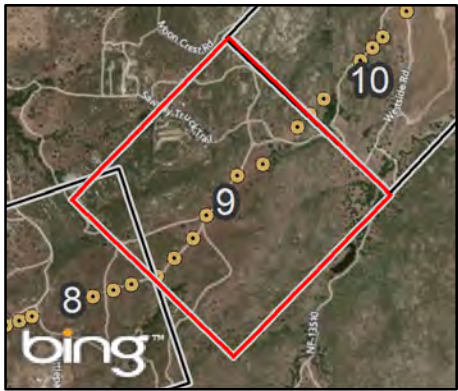
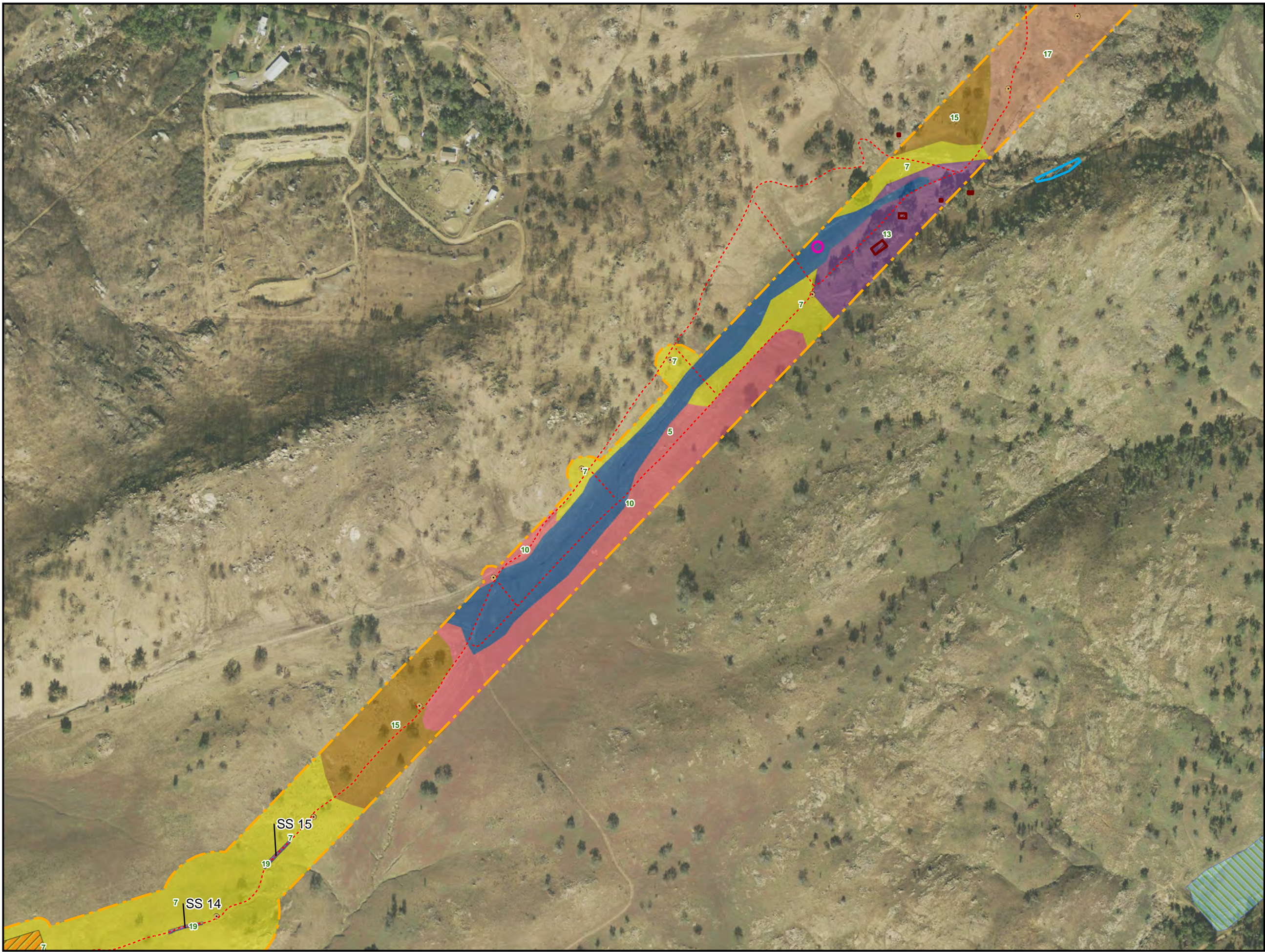








Figure 4
TL-637

Vegetation Communities Map

Page 10 of 15 Version Date: 5/31/2013

-  Poles
-  Access
-  Staging Yards
-  String Sites
-  Guard Structure
-  Survey Area
-  National Wetland Inventory

- Vegetation**
-  1. Agriculture/Orchards/Pasture
 -  2. Chaparral
 -  3. Coast Live Oak Woodland
 -  4. Coastal Sage Scrub
 -  5. Disturbed Wetland
 -  6. Disturbed (Ruderal/Barren)
 -  7. Disturbed Coastal Sage Scrub
 -  8. Disturbed Southern Mixed Chaparral
 -  9. Freshwater Seep/Open Water
 -  10. Grassland
 -  11. Mixed Disturbed Coastal Sage Scrub/Chaparral
 -  12. Mixed Disturbed Coastal Sage Scrub/Grassland
 -  13. Mixed Oak Woodland
 -  14. Oak Savanna
 -  15. Open Engelman Oak Woodland
 -  16. Southern Mixed Chaparral
 -  17. Southern Mixed Chaparral/CSS
 -  18. Southern Riparian Forest
 -  19. Urban and Developed/Ornamental Landscaping

- Rare Plants**
-  Rare Plant Points
 -  Astragalus oocarpus
 -  Brodiaea orcuttii
 -  Clarkia delicata
 -  Symphyotrichum defoliatum
 -  Tetracoccus dioicus

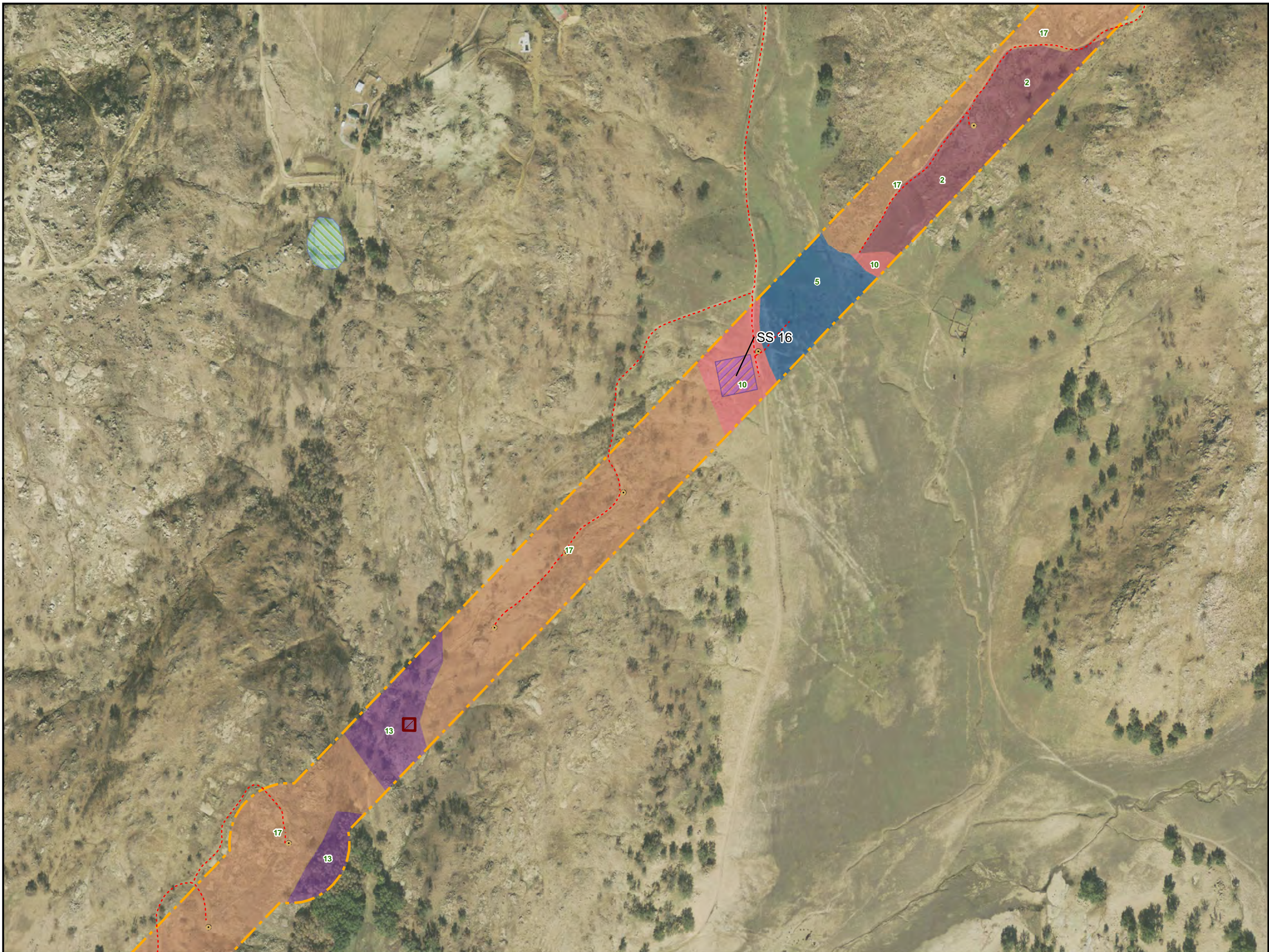








Figure 4
TL-637

Vegetation Communities Map

Page 11 of 15 Version Date: 5/31/2013

-  Poles
-  Access
-  Staging Yards
-  String Sites
-  Guard Structure
-  Survey Area
-  National Wetland Inventory

- Vegetation**
-  1. Agriculture/Orchards/Pasture
 -  2. Chaparral
 -  3. Coast Live Oak Woodland
 -  4. Coastal Sage Scrub
 -  5. Disturbed Wetland
 -  6. Disturbed (Ruderal/Barren)
 -  7. Disturbed Coastal Sage Scrub
 -  8. Disturbed Southern Mixed Chaparral
 -  9. Freshwater Seep/Open Water
 -  10. Grassland
 -  11. Mixed Disturbed Coastal Sage Scrub/Chaparral
 -  12. Mixed Disturbed Coastal Sage Scrub/Grassland
 -  13. Mixed Oak Woodland
 -  14. Oak Savanna
 -  15. Open Engleman Oak Woodland
 -  16. Southern Mixed Chaparral
 -  17. Southern Mixed Chaparral/CSS
 -  18. Southern Riparian Forest
 -  19. Urban and Developed/Ornamental Landscaping

- Rare Plants**
-  Rare Plant Points
 -  Astragalus oocarpus
 -  Brodiaea orcuttii
 -  Clarkia delicata
 -  Symphyotrichum defoliatum
 -  Tetracoccus dioicus

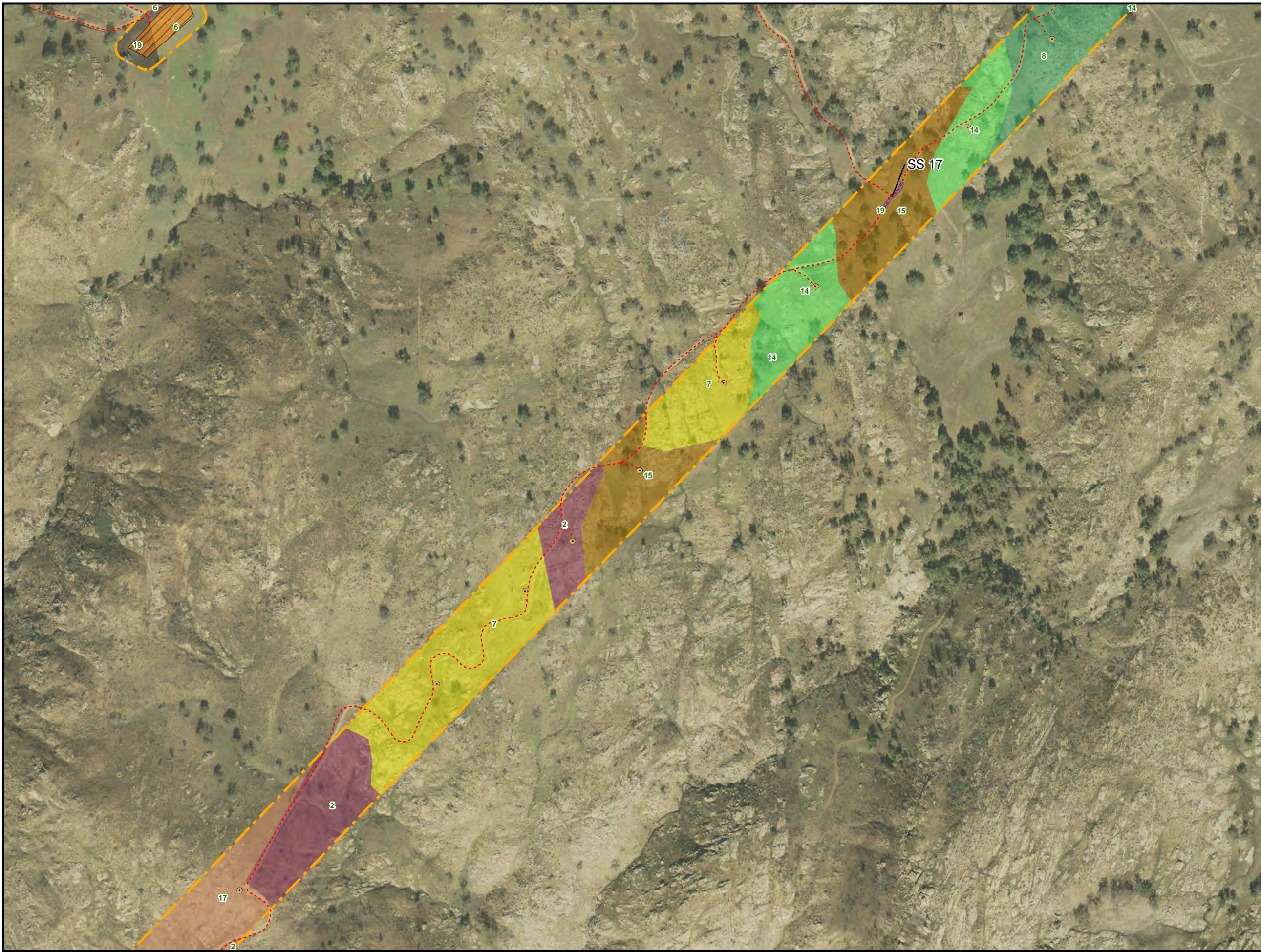


Figure 4
TL-637

Vegetation Communities Map







Page 12 of 15 Version Date: 5/31/2013

-  Poles
-  Access
-  Staging Yards
-  String Sites
-  Guard Structure
-  Survey Area
-  National Wetland Inventory

Vegetation

-  1. Agriculture/Orchards/Pasture
-  2. Chaparral
-  3. Coast Live Oak Woodland
-  4. Coastal Sage Scrub
-  5. Disturbed Wetland
-  6. Disturbed (Ruderal/Barren)
-  7. Disturbed Coastal Sage Scrub
-  8. Disturbed Southern Mixed Chaparral
-  9. Freshwater Seep/Open Water
-  10. Grassland
-  11. Mixed Disturbed Coastal Sage Scrub/Chaparral
-  12. Mixed Disturbed Coastal Sage Scrub/Grassland
-  13. Mixed Oak Woodland
-  14. Oak Savanna
-  15. Open Engleman Oak Woodland
-  16. Southern Mixed Chaparral
-  17. Southern Mixed Chaparral/CSS
-  18. Southern Riparian Forest
-  19. Urban and Developed/Ornamental Landscaping

Rare Plants

-  Rare Plant Points
-  Astragalus oocarpus
-  Brodiaea orcuttii
-  Clarkia delicata
-  Symphyotrichum defoliatum
-  Tetracoccus dioicus

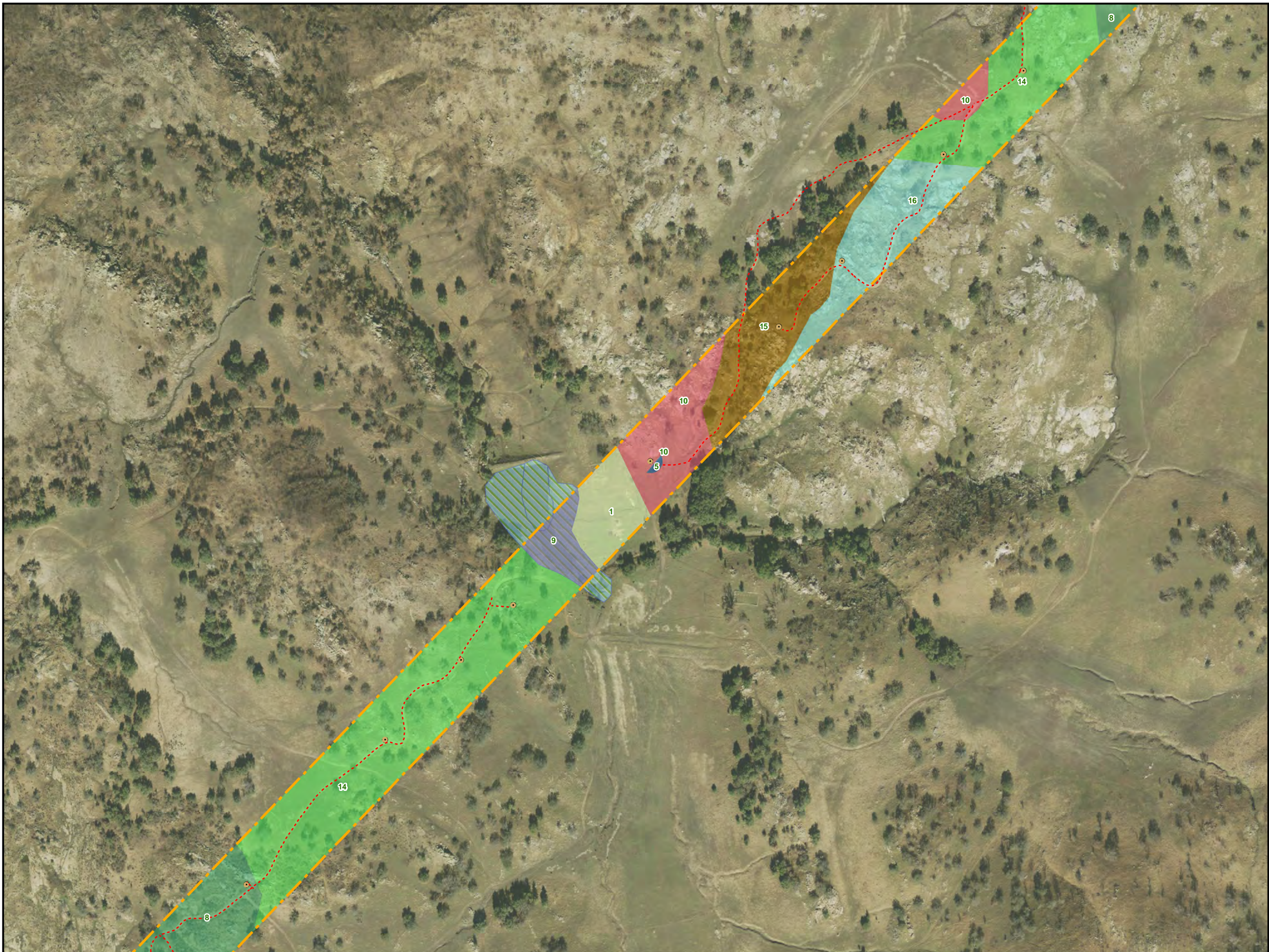








Figure 4
TL-637

Vegetation Communities Map

Page 15 of 15 Version Date: 5/31/2013

-  Poles
-  Access
-  Staging Yards
-  String Sites
-  Guard Structure
-  Survey Area
-  National Wetland Inventory

- Vegetation**
-  1. Agriculture/Orchards/Pasture
 -  2. Chaparral
 -  3. Coast Live Oak Woodland
 -  4. Coastal Sage Scrub
 -  5. Disturbed Wetland
 -  6. Disturbed (Ruderal/Barren)
 -  7. Disturbed Coastal Sage Scrub
 -  8. Disturbed Southern Mixed Chaparral
 -  9. Freshwater Seep/Open Water
 -  10. Grassland
 -  11. Mixed Disturbed Coastal Sage Scrub/Chaparral
 -  12. Mixed Disturbed Coastal Sage Scrub/Grassland
 -  13. Mixed Oak Woodland
 -  14. Oak Savanna
 -  15. Open Engleman Oak Woodland
 -  16. Southern Mixed Chaparral
 -  17. Southern Mixed Chaparral/CSS
 -  18. Southern Riparian Forest
 -  19. Urban and Developed/Ornamental Landscaping

- Rare Plants**
-  Rare Plant Points
 -  Astragalus oocarpus
 -  Brodiaea orcuttii
 -  Clarkia delicata
 -  Symphyotrichum defoliatum
 -  Tetracoccus dioicus

